



Stock Available

Bare Root | Root Bag | B & B | Container

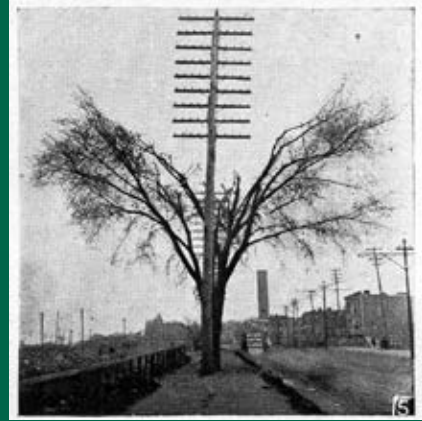
March 3, 2017



The perfect fit for under the wire!

Tree and utility line conflicts evolved right along with the power poles that began springing up in the early 20th century. After much tree disfigurement and loss from poor pruning and topping practices, "Right tree, right place" became the battle cry of urban tree managers, and still rings true today.

More than 20 years ago, we introduced our UtiliTrees™ product line in an effort to identify trees appropriate for planting in this arboreal battle zone. Today, we identify 53 trees that are a good fit for the restricted planting zone, and are also adaptable to a wide range of urban growing conditions. You'll find them at www.UtiliTrees.com in a *downloadable PDF* that includes photos and detailed descriptions. The three examples presented here are currently available bare root and/or in containers.



Tree/utility conflicts are an age-old problem, as illustrated in *Shade Trees In Towns and Cities*, by William Solotaroff, city forester of East Orange, NJ. Original copies of the 1911 text are rare, but reprints may be purchased or a free e-book downloaded, at Google Books: <http://jfs.co/ut-030317>



Malus 'Schmidtcutleaf'

Golden Raindrops® Crabapple

Zone: 3 | Height: 20' | Spread: 15'



Shape: Upright vase
Foliage: Green, deeply cut
Flower: White
Fruit: Golden yellow, 1/4"

Fine textured, deeply cut foliage gives this unusual crab a delicate appearance. The form is elegant, with slender limbs spreading horizontally from upright branches. The abundant golden yellow fruit is truly tiny.



Acer griseum

Paperbark Maple

Zone: 5 | Height: 25' | Spread: 20'



Shape: Upright spreading, rounded crown
Foliage: Trifoliate, dark green
Fall Color: Red

A small tree of rare beauty, this trifoliate maple's compound leaves give it a delicate texture in summer, then display long lasting red fall color. Exfoliating orange-brown to cinnamon-brown bark creates year round interest.



Prunus sargentii 'JFS-KW58'

Pink Flair® Cherry

Zone: 3b | Height: 25' | Spread: 15'



Shape: Upright narrow vase
Foliage: Dark green
Fall Color: Orange-red
Flower: Single pink, in clusters

Narrow and upright in form, but compact in height, this flowering cherry is well suited for urban landscapes. It avoids frost damage by flowering a week or two later than is typical of the species and has proven to be the hardiest of the flowering cherries. Fall color is consistently bright orange-red, and its handsome bark and upright symmetrical provide winter appeal.



P O Box 189 | 9500 SE 327th Ave | Boring, OR 97009

503-663-4128 | Fax 503-663-2121

Toll-Free 1-800-825-8202 | Toll-Free Fax 1-800-283-7537

Reprinted from our 03/03/2017 Stock Available List | www.jfschmidt.com